

Optimal solutions  
for your success.

INDUSTRIEFABRIK  
VALVES. STRAINERS



## Industriefabrik Schneider

Manufacturer and Supplier of  
Industrial strainers & sieves

### Product presentation Pot type strainer PSA / PSB



[www.basket-strainers.com](http://www.basket-strainers.com)

# Pot type strainer PSA / PSB

**welded design, strainer element: basket with fine sieve,  
Standard with flanges according to DIN EN 1092-1 B**

- » clean liquid and gaseous media
- » resistant to corrosion by stainless steel components
- » easy cleaning and maintenance
- » compact design and low weight
- » mounting position standing or hanging
- » design according to Pressure Equipment Directive PED 2014/68/EU
- » mesh size for filter elements individually according to customers

## Type PSA

- » quick lock by a clamp connection with wing nut according to DIN 32676
- » up to PN10

## Type PSB

- » Body quick lock (profile clamp with 2 screws)
- » up to PN16

## Standard

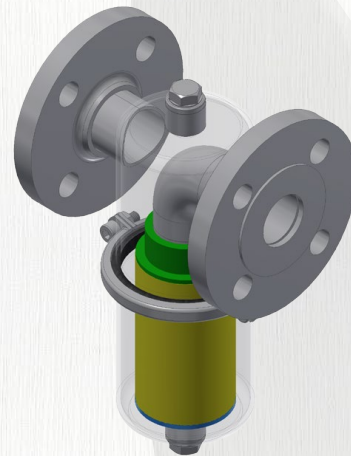
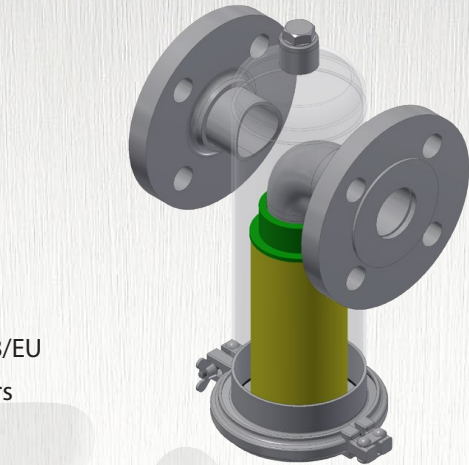
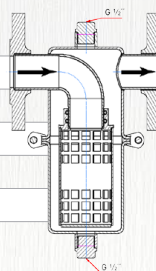
Body: Stainless steel (pickled, passivated)

Filter element and inner parts: Stainless steel

Bleed plug on top, drain plug on bottom

Mesh size: 0,5 mm

Face-to-face: according to DIN EN 558 R1

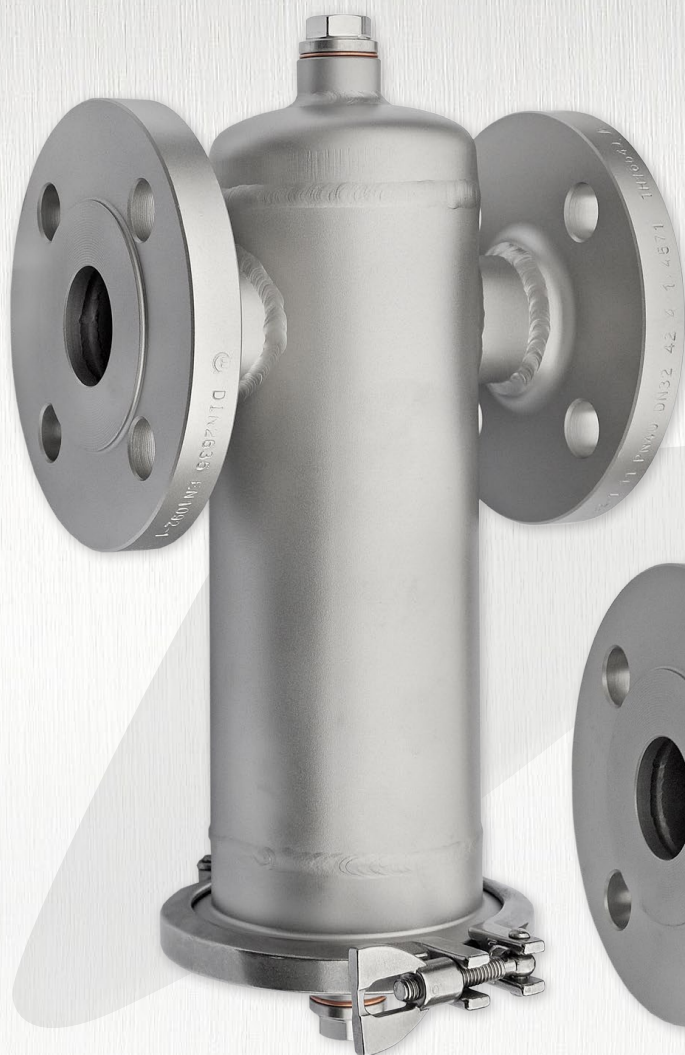


## Applications

- » Protection fittings and industrial systems, filtration processes with aggressive media, for direct integration into pipe systems, time savings for filter cleaning by body quick lock, lowcost alternative even in small nominal sizes

<b>N. diameter:</b>	DN15 ... DN100	more on request
<b>N. pressure:</b>	PN10 (Type PSA); PN16 (Type PSB)	
<b>Body:</b>	deep-draw Stainless steel X2CrNiMo17-12-2 (1.4404 / AISI: 316L)	
<b>Basket:</b>	Stainless steel X5CrNi18-10 (1.4301 / AISI 304)	
<b>Fine sieve:</b>	Stainless steel 1.4401	
<b>Inner parts:</b>	Stainless steel X5CrNi18-10 (1.4301 / AISI 304)	
<b>Gasket:</b>	EPDM	more on request
<b>Temperature:</b>	up to 150 °C	temperature dependent
<b>Face-to-face:</b>	according to DIN EN 558 R1	special size possible
<b>Mesh size:</b>	0,02 mm ... 10 mm	more on request
<b>Optional:</b>	Ball valves for quick ventilation and draining, Differential pressure display, Thermometer, Butt weld ends according to DIN EN ISO 1127, External thread according to DIN EN 10226-1 / DIN EN ISO 228-1, ANSI-flange CL150 according to ASME B16.5, NPT-screwed sockets according to ASME B16.11	





Clamp connection with  
wing nut **Type PSA**

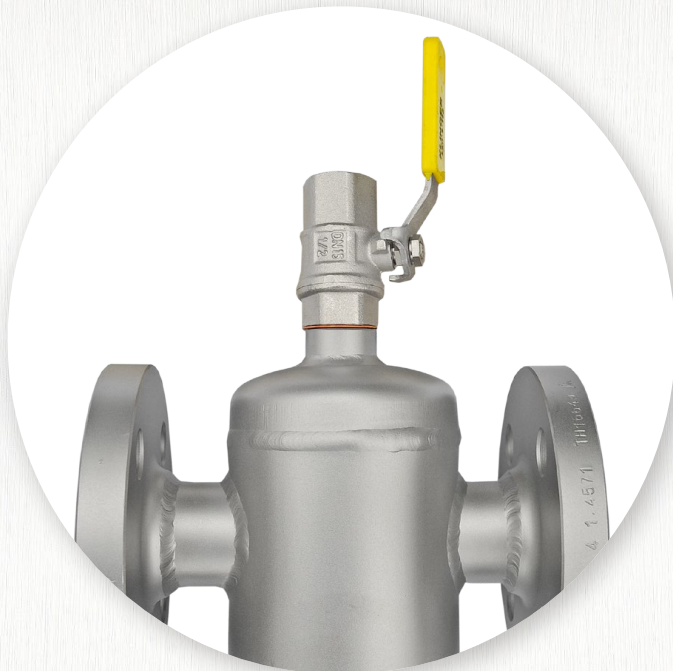


Filter element for  
**Pot type strainer**



Body quick lock  
**Type PSB**

## optional equipment



Ball valves for  
quick ventilation and draining



More from our areas **Valves manufacturing**  
**Filter engineering · Plant constructions**  
can be found at: [www.industriefabrik.com](http://www.industriefabrik.com)



**Automated  
valves**



**Heating jackets  
for Ball valves, Stop valves & Filters**

**Modular (SKID)  
industrial plants**



**INDUSTRIEFABRIK**  
ARMATUREN.FILTER



Industriefabrik Schneider GmbH  
Rosenweg 3, 06780 Großzöberitz  
Tel.: +49 (0) 34956 / 3996-0  
Fax: +49 (0) 34956 / 3996-66  
Mail: [info@industriefabrik.com](mailto:info@industriefabrik.com)  
Web: [www.industriefabrik.com](http://www.industriefabrik.com)  
[www.basket-strainers.com](http://www.basket-strainers.com)