

Optimal solutions for your success.

INDUSTRIEFABRIK
ARMATUREN.FILTER



Industriefabrik Schneider

Industrial strainers & sieves



www.industriefabrik.com

Table of contents

Industrial strainers

Basket strainer Type SKF	3
High pressure strainer Type SKF-H	6
Simplex strainer Type EF	7
Tank truck filter Type TWF	10
Duplex strainer Type DF	11
Pot strainer Type PSA / PSB	15
T-type strainer Type TF	19
Y-type strainer Type YF	22

Sieves & filter elements

Hat screen Type H	24
Plug-in sieve Type S	25
Filter elements Type A / B	26
Industrial filters & sieves	27

From our portfolio

Heating jackets for industrial valves	18
Automated valves and accessories	22



INDUSTRIEFABRIK
ARMATUREN.FILTER

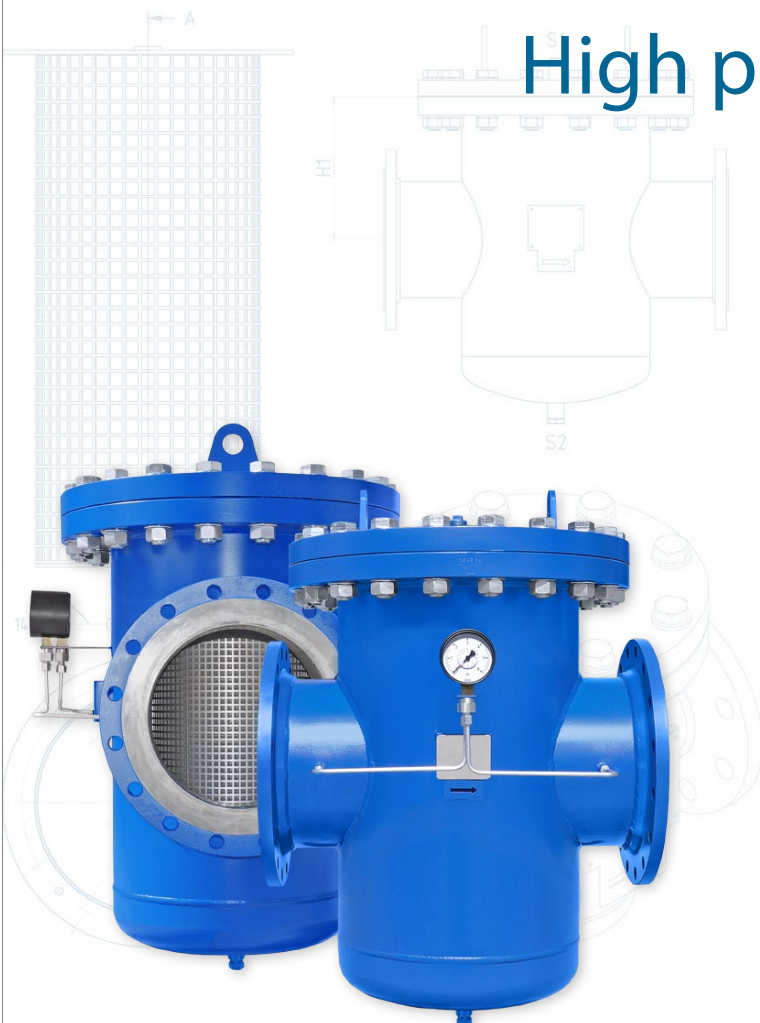


Industriefabrik Schneider GmbH
Rosenweg 3, 06780 Großzöberitz
Phone.: +49 (0) 34956 / 3996-0
Fax: +49 (0) 34956 / 3996-66
Mail: info@industriefabrik.com
Web: www.industriefabrik.com



Basket strainer Type SKF

High pressure strainer Type SKF-H

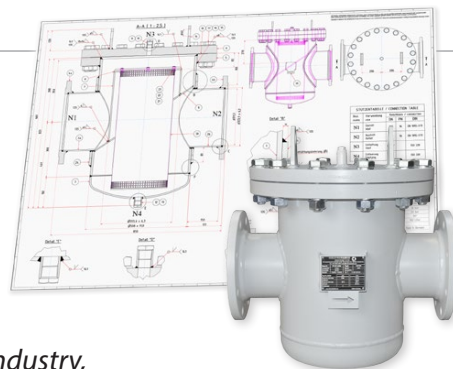


Basket type strainers or special filters – we manufacture to your specifications.

Basket type strainers of Industriefabrik Schneider GmbH are used to clean liquid, viscous and gaseous media. They offer perfect protection against undesirable particles and are cost effective in protecting your piping, industrial valves and plants. They are used in:

Power stations, water / wastewater resources management, food industry, district heating, tire, rubber, oil, gas and chemical industry.

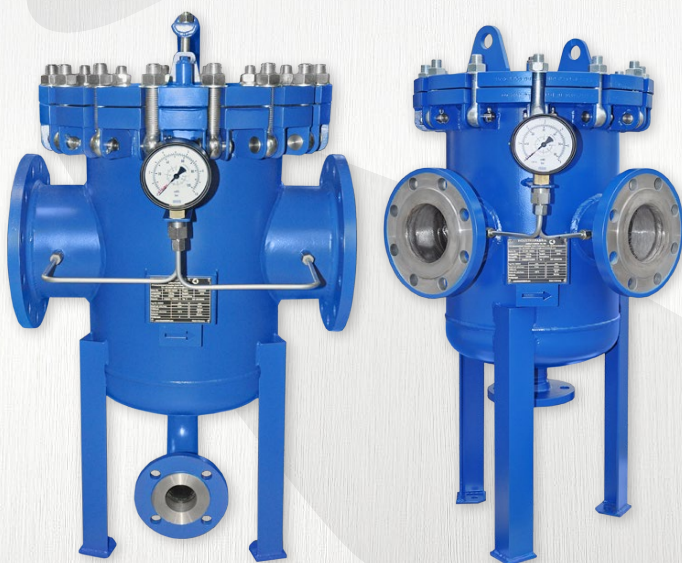
The Industriefabrik Schneider GmbH is a manufacturer and distributor of basket type strainers, duplex / simplex strainers, industrial sieves, filters and replacement screens. Our strainers are characterized by individuality and quality. We can produce your standard strainers in different versions and with various features and accessories.



Basket strainer Type SKF
DN150 with cap-lift- and swivel-unit



Basket strainer with 3-point pedestals



Optional: differential pressure display, emptying flange, quick lock by eye bolts, variant as **Corner strainer 90°**

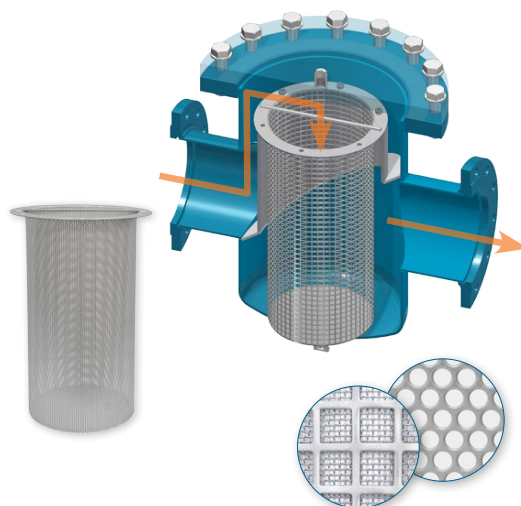


Basket strainer DN400 Type SKF
Stainless steel 1.4571

Basket strainer Type SKF

welded design, strainer element: basket with fine sieve, standard with flanges according to DIN EN 1092-1 / 01

- » clean liquid, viscous and gaseous media
- » protection pipe systems, fittings and industrial systems
- » extensive accessories and technical equipment
- » easy cleaning of filter elements
- » various surface coating and special materials
- » welded connections according DIN EN 12627 / ANSI
- » design according to Pressure Equipment Directive 2014/68/EU
- » design, mesh size for filter inserts to customer specifications



Standard Type SKF

Body: Steel (blue, RAL5010) / Stainless steel (pickled, passivated)
 Basket: Stainless steel (1.4301) with square perforation Qg 10-12, Fine sieve 1 mm
 Vent socket in the cap, drain socket in the dished end
 Temperature range: -10 ... +50 °C



Applications

- » wastewater, spray nozzle systems, protection of heat exchangers, food industry, descaling systems, lubrication systems, cooling towers, boiler feed water, paper coating, refining, watering plants, paper industries, and many more

N. diameter:	DN50 ... DN1200	more on request
N. pressure:	PN16 (PN06, PN10)	PN40, PN63 – more on request
Body:	Steel P235GH (1.0345)	Stainless steel 1.4571
Flange:	Steel P250GH (1.0460)	Stainless steel 1.4571
Gasket:	Graphite-Carrier sheet	more on request
Basket:	Stainless steel 1.4301	
Fine sieve:	Stainless steel 1.4401	
Temperature:	-10 °C ... +50 °C	on request -200 °C ... 450 °C
Face-to-face:	according to EN 558-1	customer specifications
Mesh size:	0,01 mm ... 10 mm	more on request
Optional:	Special material (Monell, Hastelloy, Duplex, ...), quick lock, pedestal, supporting bracket, cap-lift- and swivel-unit, mounted valves, heating jacket, various certificates and approvals	

Mounted valves for Type SKF

Shut off and regulating media stream:

- » ball valves, butterfly valves, gate valves, blank disks, ring spacers, orifice plates

Security and monitoring of the media:

- » bursting disks, magnet bars, differential pressure display, analogue / digital thermometers

more brand name valves and accessories under:

www.industriefabrik.com

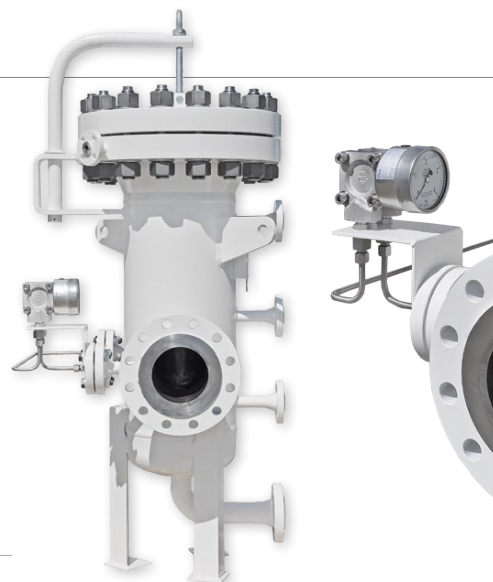


High pressure strainer Type SKF-H

welded design, strainer element: basket with fine sieve, standard with flanges according to DIN EN 1092-1 / 01

- » clean liquid, viscous and gaseous media
- » protection pipe systems, fittings and industrial systems
- » variants for high nominal pressure to PN400
- » with tongue and groove in the sealing surface
- » vent socket in the cap, drain socket in the dished end
- » design according to Pressure Equipment Directive 2014/68/EU

N. diameter:	DN50 ... DN500, more on request
N. pressure:	up to PN400 (according DIN EN 1333)
Body:	Steel P235GH (1.0345) / Stainless steel 1.4571
Flange:	Steel P250GH (1.0460) / Stainless steel 1.4571
Gasket:	Cam-profile gaskets, more on request
Basket:	Stainless steel 1.4301
Fine sieve:	Stainless steel 1.4401
Temperature:	-10 °C ... +50 °C; on request -200 °C ... 450 °C
Face-to-face:	according to EN 558-1 / customer specifications
Mesh size:	0,01 mm ... 10 mm, more on request
Optional:	Special material, quick lock, pedestal, supporting bracket, cap-lift- and swivel-unit, mounted valves, heating jacket, various certificates and approvals



High pressure strainer **Type SKF-H**
Steel, DN150 CL400 (68 bar),
with differential pressure display



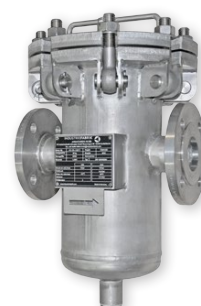
High pressure strainer
Type SKF-H, Steel, PN100



Basket strainer DN700
for district heating



Basket strainer DN500
in special length



SKF DN50 PN16
Stainless steel 1.4301



Basket strainer 16" / 4" acc. ANSI 150 RF



heatable strainer
with welded
stainless steel
heating jacket



SKF DN50
Duplex steel 1.4462



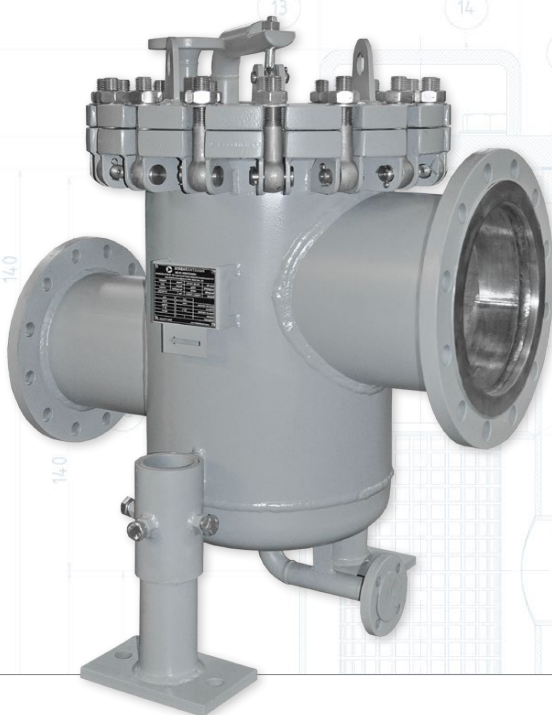
SKF in special construction

INDUSTRIEFABRIK
ARMATUREN . FILTER



Simplex strainer
Type EF

Tank truck filter
Type TWF

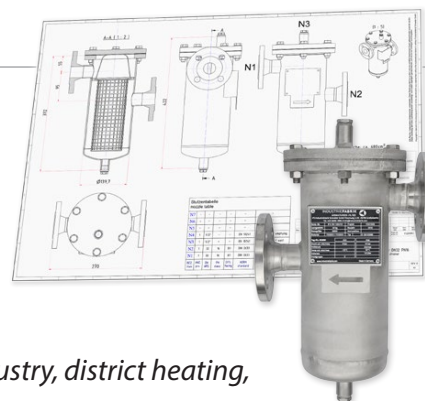


Simplex strainers – versatile industrial strainers.

Simplex type strainers of Industriefabrik Schneider GmbH are used to clean liquid, viscous and gaseous media. They offer perfect protection against undesirable particles and are cost effective in protecting your piping, industrial valves and plants. Simplex type strainers are widespread and versatile industrial filters. They are used in:

Power stations, water / wastewater resources management, food industry, district heating, tire, rubber, oil, gas and chemical industry.

The Industriefabrik Schneider GmbH is a manufacturer and distributor of basket type strainers, duplex / simplex strainers, industrial sieves, filters and replacement screens. Our strainers are characterized by individuality and quality. We can produce your standard strainers in different versions and with various features and accessories.



Simplex strainer Type EF
DN250, with pedestal, quick lock by eye bolts and cap-lift- and swivel-unit



Simplex strainer Type EF
DN50, pressure monitor with magnetic snap



Tank truck filter Type TWF
Variant: Corner strainer 90°

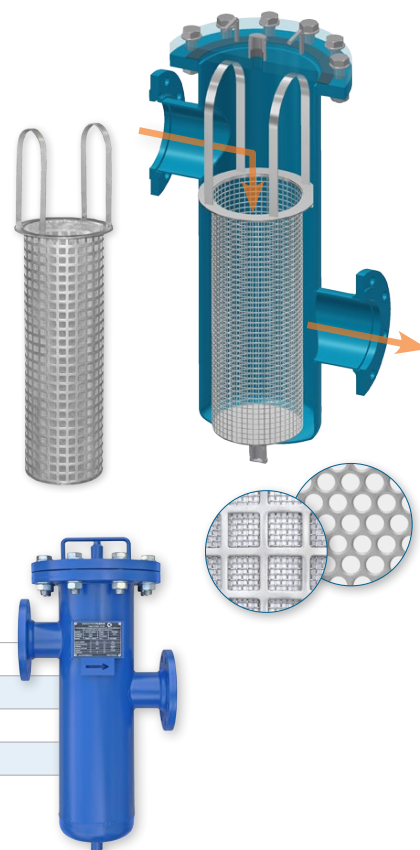
Simplex strainer Type EF
DN150, Stainless steel



Simplex strainer Type EF

welded design, strainer element: basket with fine sieve, standard with flanges according to DIN EN 1092-1 / 01

- » clean liquid, viscous and gaseous media
- » protection pipe systems, fittings and industrial systems
- » extensive accessories and technical equipment
- » easy cleaning of filter elements
- » various surface coating and special materials
- » welded connections according DIN EN 12627 / ANSI
- » design according to Pressure Equipment Directive 2014/68/EU
- » design, mesh size for filter inserts to customer specifications



Standard Type EF

Body: Steel (blue, RAL5010) / Stainless steel (pickled, passivated)

Basket: Stainless steel (1.4301) with square perforation Qg 10-12, Fine sieve 1 mm

Vent socket in the cap, drain socket in the dished end

Temperature range: -10 ... +50 °C

Applications

- » wastewater, spray nozzle systems, protection of heat exchangers, food industry, descaling systems, lubrication systems, cooling towers, boiler feed water, paper coating, refining, watering plants, paper industries, and many more

N. diameter:	DN50 ... DN500	more on request
N. pressure:	PN16 (PN06, PN10)	PN40, PN63 – more on request
Body:	Steel P235GH (1.0345)	Stainless steel 1.4571
Flange:	Steel P250GH (1.0460)	Stainless steel 1.4571
Gasket:	Graphite-Carrier sheet	more on request
Basket:	Stainless steel 1.4301	
Fine sieve:	Stainless steel 1.4401	
Temperature:	-10 °C ... +50 °C	on request -200 °C ... 450 °C
Face-to-face:	according to EN 558-1	customer specifications
Mesh size:	0,01 mm ... 10 mm	more on request
Optional:	Special material (Monell, Hastelloy, Duplex, ...), quick lock, pedestal, supporting bracket, cap-lift- and swivel-unit, mounted valves, heating jacket, various certificates and approvals	

Mounted valves for Type EF

Shut off and regulating media stream:

- » ball valves, butterfly valves, gate valves, blank disks, ring spacers, orifice plates

Security and monitoring of the media:

- » bursting disks, magnet bars, differential pressure display, analogue / digital thermometers

more brand name valves and accessories under:

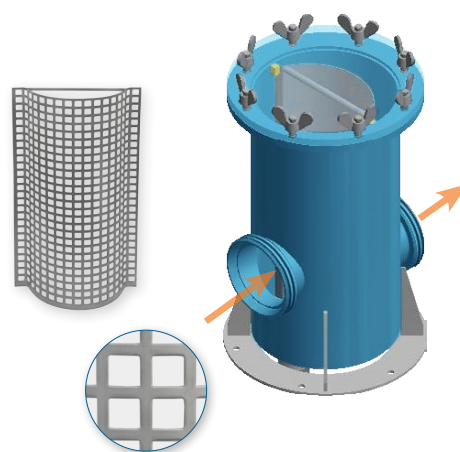
www.industriefabrik.com



Tank truck filter Type TWF

**welded design, filter element standing curved,
dairy pipe connection according DIN 11851**

- » filtration of coarse components from the media stream
- » protection of pipelines, storage tanks and pumps
- » corrosion resistant by stainless steel components
- » time savings through body quick lock by eye bolts
- » filter change without tools
- » drain plug on bottom



N. diameter:	main pipe DN200
N. pressure:	2 bar; more on request
Connection:	DN100, 130 mm x 1/4" acc. DIN 11851, Stainless steel
Body:	Stainless steel 1.4571
Filter element:	Stainless steel 1.4301
Mesh size:	10 mm, square perforation Qg 10-15; more on request
Temperature:	-10 °C ... +50 °C; more on request
Face-to-face:	Ø = 300 mm, H = 524 mm; customer specifications
Volume:	approx. 16 l
Optional:	ball valves for quick venting and emptying, pedestal, quick couplings



Tank truck filter **Type TWF**



Simplex type strainer

Stainless steel, DN200, variant with outlet in the bottom, prefilter for coarse ingredients

Tank truck filter Type TWF

Variant with 3-point pedestals and ball valve emptying, connection pipe with quick coupling

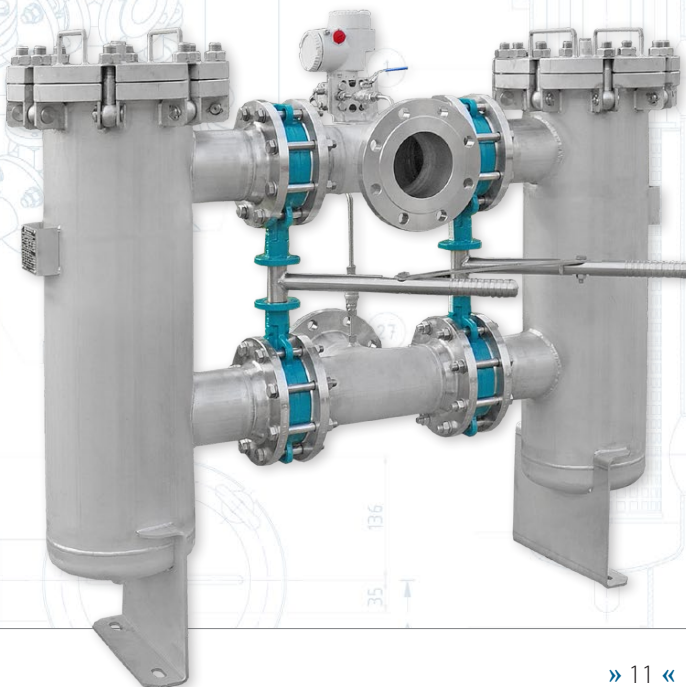
Simplex type strainer

Steel, DN80, oil filter for waste oil, welding ends, quick lock

INDUSTRIEFABRIK
ARMATUREN.FILTER



Duplex strainer Type DF

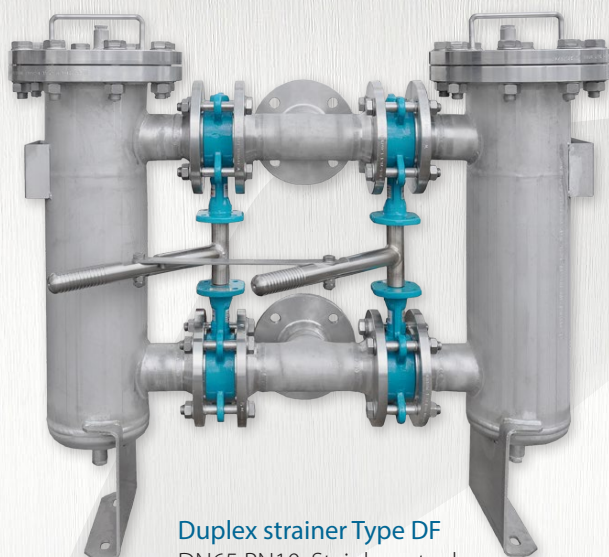
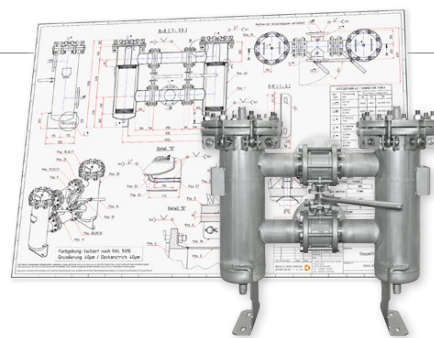


Duplex type strainers – uninterrupted production process.

Duplex type strainers of Industriefabrik Schneider GmbH are used to clean liquid, viscous and gaseous media. They offer perfect protection against undesirable particles and are cost effective in protecting your piping, industrial valves and plants.

The cleaning of the sieve inserts can be done during production. By manual or automatic switching of the filter unit does not interrupt the production process.

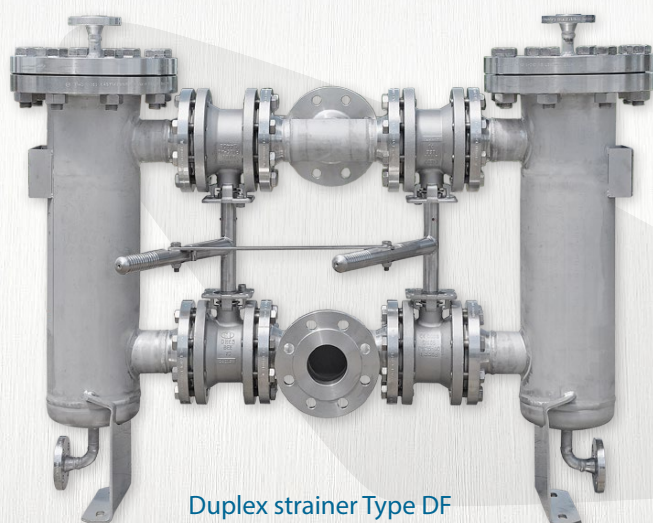
The Industriefabrik Schneider GmbH is a manufacturer and distributor of basket type strainers, duplex / simplex strainers, industrial sieves, filters and replacement screens. Our strainers are characterized by individuality and quality. We can produce your standard strainers in different versions and with various features and accessories.



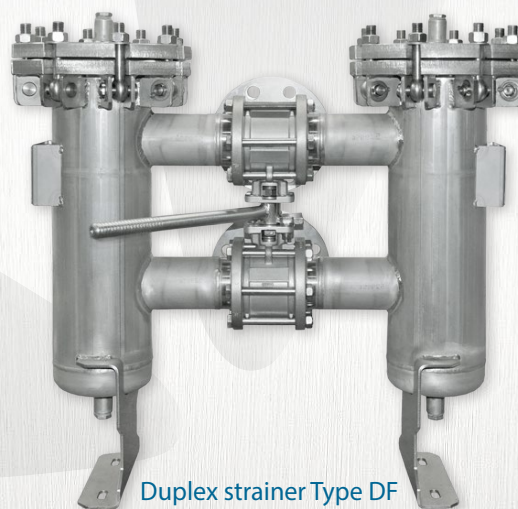
Duplex strainer Type DF
DN65 PN10, Stainless steel,
manual switchable filter unit
with butterfly valves



Duplex strainer Automated
DN65 PN10, Steel,
automated switchable filter unit
with pneumatic actuator



Duplex strainer Type DF
DN65 PN40, Stainless steel,
manual switchable filter unit
with 4 ball valves

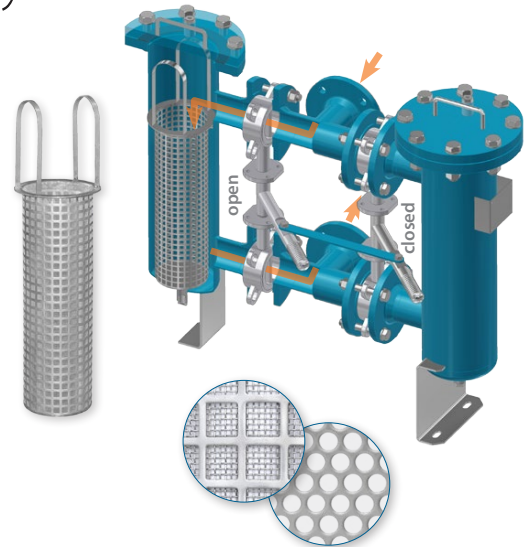


Duplex strainer Type DF
DN65 PN16, Stainless steel,
manual switchable filter unit
with 2 3-way ball valves

Duplex strainer Type DF – Butterfly valves

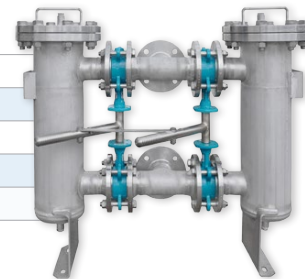
**welded design, strainer element: basket with fine sieve,
standard with flanges according to DIN EN 1092-1 / 01**

- » clean liquid, viscous and gaseous media
- » protection pipe systems, fittings and industrial systems
- » butterfly valves for uninterrupted production process by manual switchable filter unit
- » easy cleaning of filter elements
- » extensive accessories and technical equipment
- » welded connections according DIN EN 12627 / ANSI
- » various surface coating and special materials
- » design, mesh size for filter inserts to customer specifications
- » design according to Pressure Equipment Directive 2014/68/EU



Standard Butterfly valves

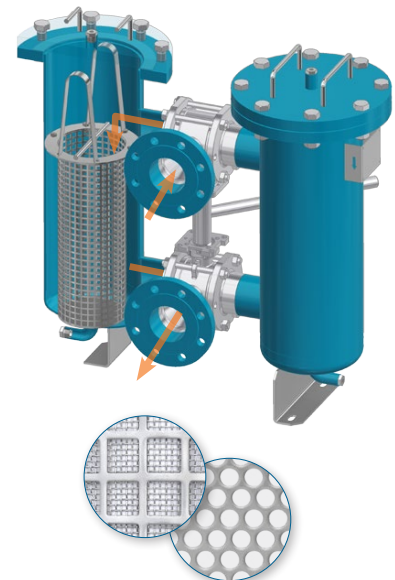
- | |
|------------------------------------------------------------------------------------|
| Body: Steel (blue, RAL5010) / Stainless steel (pickled, passivated) |
| Basket: Stainless steel (1.4301) with square perforation Qg 10-12, Fine sieve 1 mm |
| Vent socket in the cap, drain socket in the dished end |
| Manual switching unit with 4 butterfly valves |
| Angle stand with mounting holes |



Duplex strainer Type DF – Ball valves

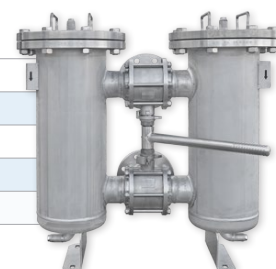
**welded design, strainer element: basket with fine sieve,
standard with flanges according to DIN EN 1092-1 / 01**

- » clean liquid, viscous and gaseous media
- » protection pipe systems, fittings and industrial systems
- » 2-way ball valves for uninterrupted production process by manual switchable filter unit
- » variants with 3-way ball valves for compact design
- » extensive accessories and technical equipment
- » easy cleaning of filter elements
- » welded connections according DIN EN 12627 / ANSI
- » various surface coating and special materials
- » design, mesh size for filter inserts to customer specifications
- » design according to Pressure Equipment Directive 2014/68/EU



Standard Ball valves

- | |
|------------------------------------------------------------------------------------|
| Body: Steel (blue, RAL5010) / Stainless steel (pickled, passivated) |
| Basket: Stainless steel (1.4301) with square perforation Qg 10-12, Fine sieve 1 mm |
| Vent socket in the cap, drain socket in the dished end |
| Manual switching unit with 4 2-way- or 2 3-way ball valves |
| Angle stand with mounting holes |



Duplex strainer Type DF – Automated

**welded design, strainer element: basket with fine sieve,
standard with flanges according to DIN EN 1092-1 / 01**

- » clean liquid, viscous and gaseous media
- » protection pipe systems, fittings and industrial systems
- » pneumatic rotary actuator with butterfly valves for uninterrupted production process by automated switchable filter unit
- » analogue / digital differential pressure displays and thermometers for automated control and regulation of filtration processes
- » welded connections according DIN EN 12627 / ANSI
- » design according to Pressure Equipment Directive 2014/68/EU



Applications

- » filtration of media in automated production processes, wastewater, protection of heat exchangers, food industry, lubrication systems, cooling towers, boiler feed water, paper coating, refining, watering plants, paper industries, and many more

N. diameter:	DN50 ... DN150	more on request
N. pressure:	PN16 (PN06, PN10)	PN40, PN63 – more on request
Body:	Steel P235GH (1.0345)	Stainless steel 1.4571
Flange:	Steel P250GH (1.0460)	Stainless steel 1.4571
Gasket:	Graphite-Carrier sheet	more on request
Basket:	Stainless steel 1.4301	
Fine sieve:	Stainless steel 1.4401	
Temperature:	-10 °C ... +50 °C	on request -200 °C ... 450 °C
Face-to-face:	according to EN 558-1	customer specifications
Mesh size:	0,01 mm ... 10 mm	more on request
Optional:	Special material (Monell, Hastelloy, Duplex, ...), quick lock, supporting bracket, cap-lift- and swivel-unit, 3-point pedestals, mounted valves, heating jacket, various certificates and approvals	

Mounted valves for Type DF

Shut off and regulating media stream:

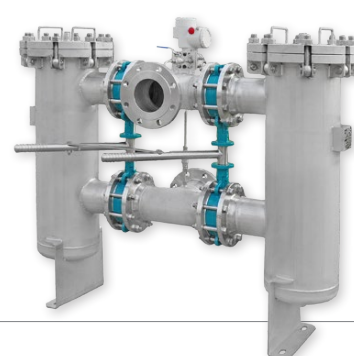
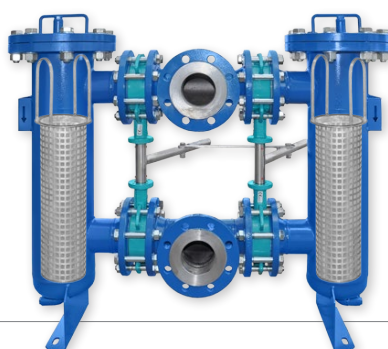
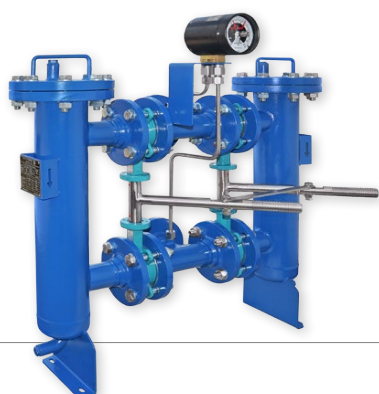
- » ball valves, butterfly valves, gate valves, blank disks, ring spacers, orifice plates

Security and monitoring of the media:

- » bursting disks, magnet bars, differential pressure display, analogue / digital thermometers

more brand name valves and accessories under:

www.industriefabrik.com



INDUSTRIEFABRIK
ARMATUREN . FILTER

Pot type strainer
Type PSA / PSB

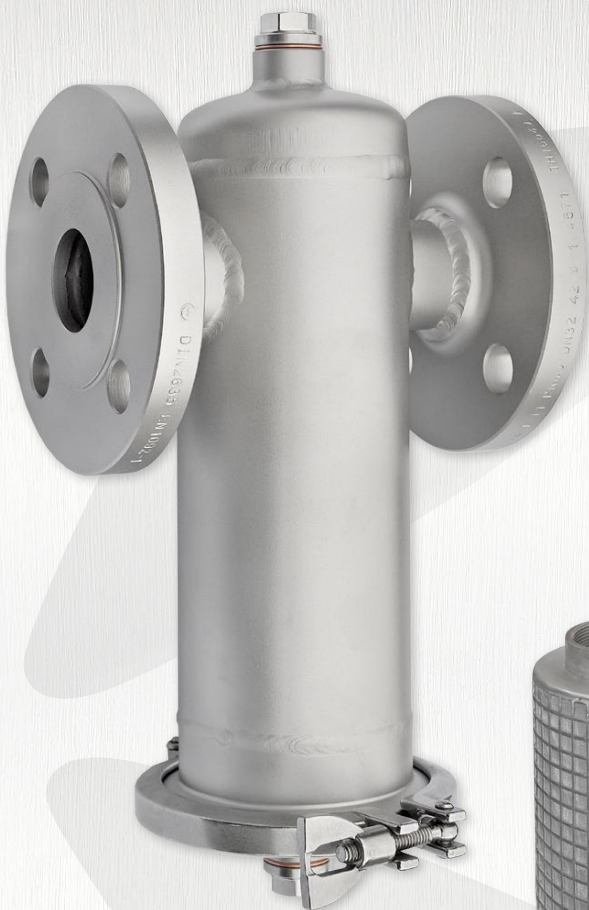
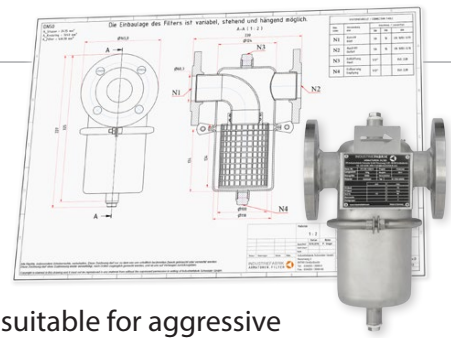
Technical drawing of a Pot type strainer (Type PSA / PSB) showing various views and dimensions. The drawing includes a top view, a side view, a cross-section view, and a detailed view of the strainer element. The main body is cylindrical with a flange at the top and a flange at the bottom. The strainer element is a cylindrical mesh basket. Dimensions are given in millimeters (mm). Key dimensions include: overall height 572 mm, overall diameter 380 mm, top flange diameter 219 mm, bottom flange diameter 219 mm, strainer element diameter 169 mm, strainer element height 182 mm, and strainer element mesh size 12.1 mm. The drawing also shows a detailed view of the strainer element with dimensions 12.1, 12.2, 12.4, and 2.2. The strainer element is labeled N2 and N4. The main body is labeled N1 and N3. The drawing includes a 3D rendering of the strainer and a detailed view of the strainer element.

Pot type strainers made of stainless steel – a cost effective alternative.

Pot type strainers are a cost-efficient alternative to the traditional strainers. They are also available in small mesh sizes (from DN15) and can be directly intergrated into the pipeline systems. Potholders are made entirely of stainless steel, are resistant to the corrosion and are suitable for aggressive media. The standard version consists of a deep-drawn stainless steel housing and has a vent socket in the lid, drain socket in the dished end.

Pot type strainers Type PSA do **not need a tool for changing the sieve inserts**. A clamp connection with a wing nut according to the DIN 32676 closes the housing up to the pressure stage PN10.

Pot type strainers Type PSB have a **quick-release housing** (clamp ring with 2 screws) and can be used up to the pressure level PN16.



clamp connection with wing nut **Type PSA**

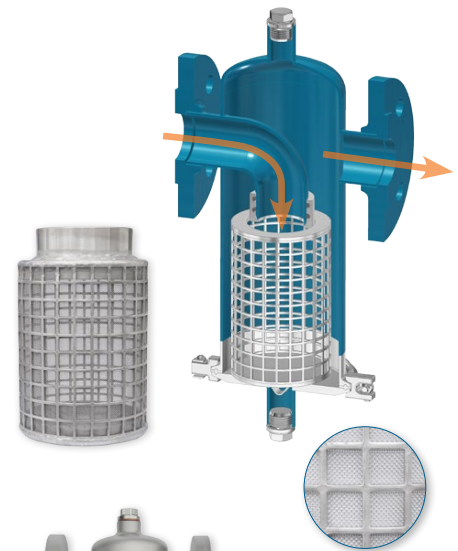


body quick lock **Type PSB**

Pot type strainer Type PSA / PSB

**welded design, strainer element: basket with fine sieve,
standard with flanges according to DIN EN 1092-1 B**

- » clean liquid and gaseous media
- » resistant to corrosion by stainless steel components
- » easy cleaning and maintenance
- » compact design and low weight
- » mounting position standing or hanging
- » design according to Pressure Equipment Directive 2014/68/EU
- » mesh size for filter elements individually according to customers



Standard Type PSA

Body: Stainless steel (pickled, passivated)

Basket: Stainless steel (1.4301) with square perforation Qg 10-12, Fine sieve 0,5 mm

Aseptic clamp connection with wing nut according DIN 32676

Vent socket in the cap, drain socket in the dished end



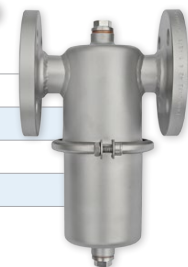
Standard Type PSB

Body: Stainless steel (pickled, passivated)

Basket: Stainless steel (1.4301) with square perforation Qg 10-12, Fine sieve 0,5 mm

Body quick lock (clamp ring with 2 screws)

Vent socket in the cap, drain socket in the dished end



Applications

- » protection fittings and industrial systems, filtration processes with aggressive media, for direct integration into pipe systems, time savings for filter cleaning by body quick lock, lowcost alternative even in small nominal sizes

N. diameter:	DN15 ... DN100	
N. pressure:	Type PSA: PN10; Type PSB: PN16	
Body:	Type PSA: Stainless steel 1.4404; Type PSB: Stainless steel 1.4404, deep draw	
Flange:	Stainless steel 1.4571	
Gasket:	EPDM	more on request
Basket:	Stainless steel 1.4301	screwed
Fine sieve:	Stainless steel 1.4401	
Temperature:	-30 ... 150 °C, depending on pressure / media	
Face-to-face:	according EN 558	special size possible
Mesh size:	0,02 mm ... 10 mm	more on request
Optional:	Butt weld ends according to DIN EN ISO 1127, External thread according to DIN EN 10226-1 / DIN EN ISO 228-1, ANSI-flange CL150 according to ASME B16.5, NPT-screwed sockets according to ASME B16.11	

Mounted valves for Type PSA / PSB

Shut off and monitoring media stream:

- » ball valves for quick venting and emptying, differential pressure display, analogue / digital thermometer
- more brand name valves and accessories under:
www.industriefabrik.com





Type PSB DN40
with flange connection



mounting position
standing



mounting position
hanging



Type PSA DN100
with flange connection

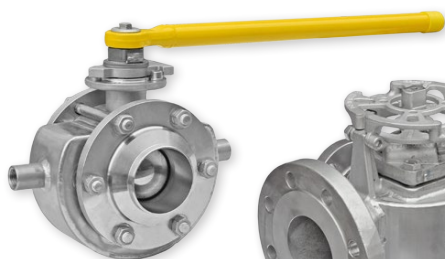


Type PSA DN50
with dairy pipe connection
DN50 according DIN 11851



from our portfolio:

Heating jackets for industrial valves



- » Basket strainers
- » Simplex strainer
- » Y-type strainers
- » T-type strainers



- » 2-, 3-way ball valves
- » 2-, 3-piece ball valves
- » Automated ball valves

- » Stop valves
- » Control valves
- » Angle seat valves
- » Regulating valves





T-type strainer
Type TF

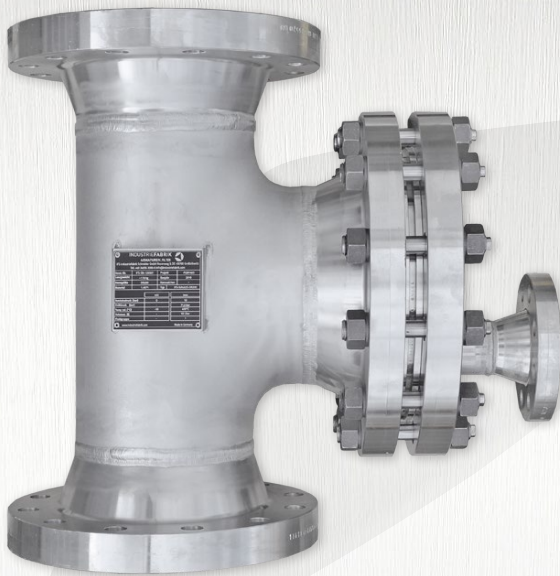
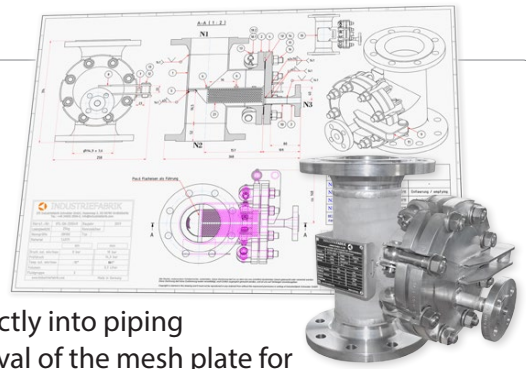
Y-type strainer
Type YF



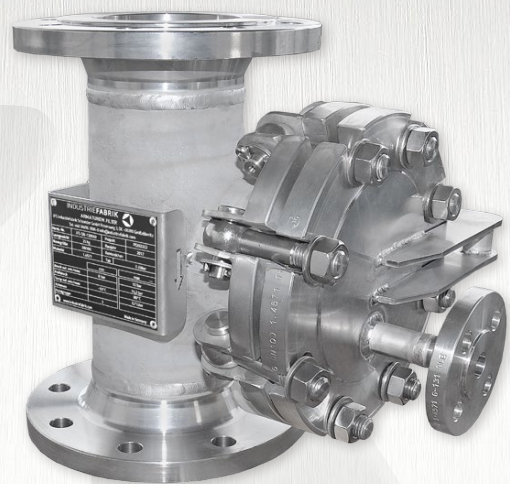
T-type strainers – direct integration in piping systems.

T-type strainers of Industriefabrik Schneider GmbH are used to clean liquid, viscous and gaseous media. They serve to protect downstream plant components such as fittings, pumps, storage tanks and pipelines. This design allows them to be integrated directly into piping systems. A cover pivot mechanism with hinge facilitates the removal of the mesh plate for cleaning and maintenance work.

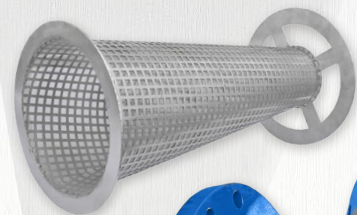
The Industriefabrik Schneider GmbH is a manufacturer and distributor of basket type strainers, duplex / simplex strainers, industrial sieves, filters and replacement screens. Our strainers are characterized by individuality and quality. We can produce your standard strainers in different versions and with various features and accessories.



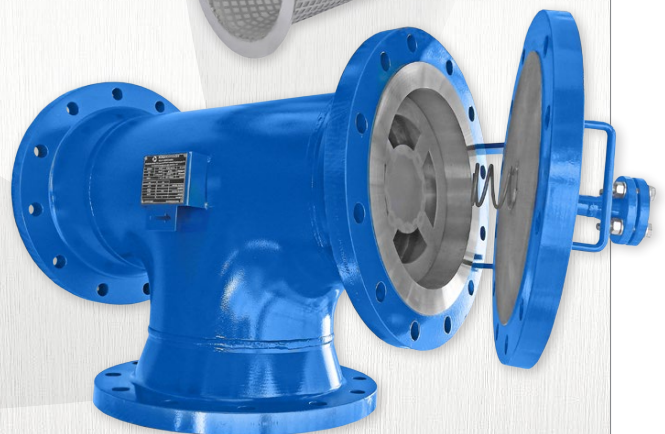
T-type strainer, stainless steel
DN200, flange connections



T-type strainer, vertical position
DN100, body quick look by eye bolts



T-type strainer, vertical position
DN400, welded connections

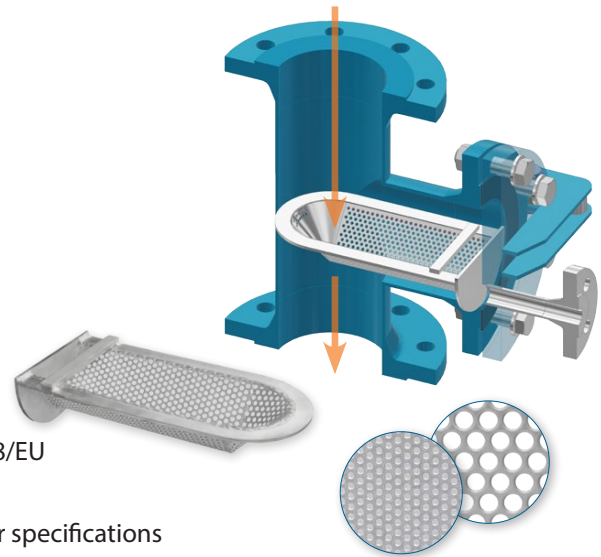


T-type strainer, horizontal position
12", steel, flange connections

T-type strainer Type TF

**welded design, mesh plate with fine sieve,
standard with flange according DIN EN 1092-1 / 01**

- » clean liquid, viscous and gaseous media
- » collision protection or permanent protection of pipes, pumps and valves
- » easy removal and cleaning of the mesh plate
- » design for vertical and horizontal position of installation
- » welded connections according DIN EN 12627 / ANSI
- » design according to Pressure Equipment Directive 2014/68/EU
- » various surface coatings and special materials
- » design, mesh size for filter inserts / mesh plate to customer specifications



Standard Type TF

Body: Steel (blue, RAL5010) / Stainless steel (pickled, passivated)

Filter element: Mesh plate stainless steel with round perforation, Mesh size 2 mm

Vent socket / vent flange in the case cover

Cover with handles



Applications

- » water / waste water, irrigation systems, paper industry, protection of industrial plants, raw oil filtration, lube oil systems, by construction T-shaped direct integration into pipeline systems, etc.

N. diameter:	DN100 ... DN1000	more on request
N. pressure:	uo to 600 lbs	more on request
Body:	Steel P235GH (1.0345); Stainless steel 1.4571	
Filter element:	Stainless steel 1.4404, mesh size 1 ... 10 mm	
Temperature:	-10 °C ... 400 °C	
Face-to-face:	according EN 558-1	customer specifications
Optional:	cover pivot mechanism with hinge, handles, body quick look, differential pressure display, analogue / digital thermometer, heating jacket, welded connections, different designs	



T-type strainer
DN350, differential pressure display

Y-strainer Type YF

**in different versions and variants,
basket with fine sieve**

- » clean liquid, viscous and gaseous media
- » protection of pipes, pressure vessels, pumps and valves
- » design according to Pressure Equipment Directive 2014/68/EU

N. diameter:	DN10 ... DN500, more on request
Body:	Steel / Stainless steel / Cast iron, more on request
Connections:	Flange / Welding ends / Thread
Basket:	Stainless steel
Face-to-face:	according EN 558, EN12982, special length
Mesh size:	0,01 mm ... 10 mm, more on request
Optional:	differential pressure gauge, heating jacket, drain / vent plug, butt weld ends, different sizes

Modifikations Y-strainers

- » construct and replacement of filter inserts
- » changing of seals (also of third-party suppliers)
- » installation of differential pressure gauge, venting, emptying, custom fittings connections

numerous Y-strainers renowned manufacturers at the shop under: order.industriefabrik.com



from our portfolio

Automated valves and accessories for Actuators



- » Couplings
- » Mounting brackets
- » Special adapters
- » Spindle extensions



- » Butterfly valves
- » Ball valves
- » Shut-off valves
with electrical or pneumatic actuator



Hat screen
Type H

Plug-in sieve
Type S

Filter inserts
Type A / B

Hat screen Type H

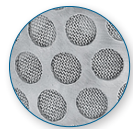
welded design, to install between standard flanges according to DIN EN 1092-1 Form B1 / ANSI B 16.5, Stainless steel

- » clean liquid, viscous and gaseous media
- » temporary protection during commissioning of industrial plants
- » permanent protection downstream valves and pipes
- » long life time and low pressure losst
- » incident flow from inside to outside
- » customized overall length and mesh size

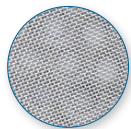


Technical specifications Type H

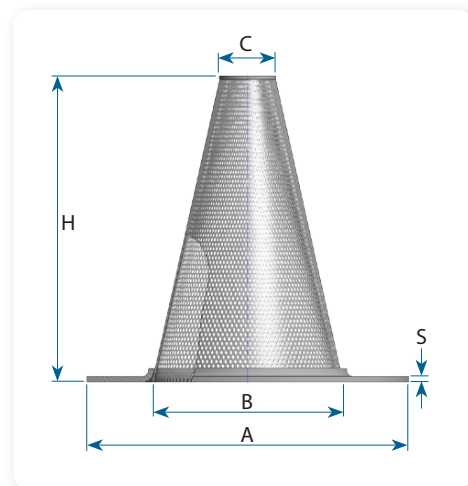
N. diameter:	DN25 ... DN300; more on request
N. pressure:	PN10 ... PN40
Sieve ring:	Stainless steel 1.4571, S = 3 mm
Perforated sheets 1.4571:	DN025 ... DN125: perforation Rv 5/8 × 1 DN200 ... DN300: perforation Rv 3,1/4,5 × 1
Wire mesh 1.4401:	DN025 ... DN125: mesh size 1,0 mm DN200 ... DN300: mesh size 1,5 mm
Optional:	incident flow from outside to inside, individual design / perforated sheets, material thickness



Incident flow from
inside to outside



Incident flow from
outside to inside



N. diameter DN	Ø Foot B [mm]	Ø Tip C [mm]	Height H [mm]	Flange PN10 A [mm]	Flange PN16 A [mm]	Flange PN25 A [mm]	Flange PN40 A [mm]
50	53	18	85	106	106	106	106
65	68	18	119	126	126	126	126
80	83	18	153	141	141	141	141
100	103	28	175	161	161	167	167
125	128	28	232	191	191	193	193
150	153	33	277	216	216	222	222
200	203	63	322	271	271	282	288
250	253	63	435	326	327	338	350
300	303	63	548	376	382	398	415



Plug-in sieve Type S

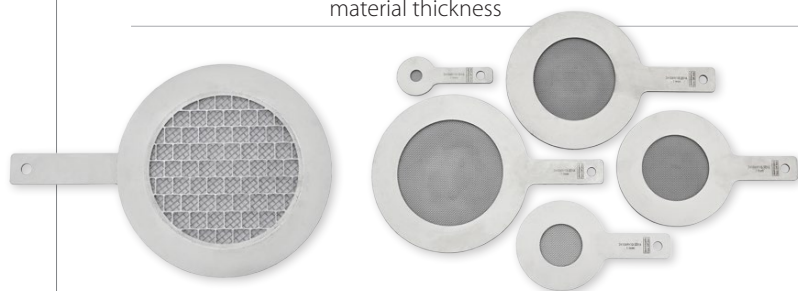
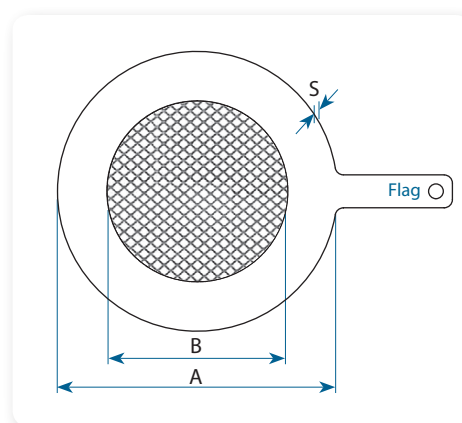
welded design, to install between standard flanges according to DIN EN 1092-1 Form B1 / ANSI B 16.5, Stainless steel

- » clean liquid, viscous and gaseous media
- » temporary protection during commissioning of industrial plants
- » permanent protection downstream valves and pipes
- » long life time and low pressure loss
- » due to the thin construction depth faster installation, expansion and cleaning
- » for horizontal and vertical mounting position



Technical specifications Type S

N. diameter:	DN25 ... DN300; more on request
N. pressure:	PN10 ... PN40
Sieve ring:	Stainless steel 1.4571, S = 3 mm
Wire mesh:	Stainless steel 1.4301; internally, mesh size 1 mm
Optional:	individual design / perforated sheets, different material thickness



N. diameter DN	Ø Bore B [mm]	Flange PN10 A [mm]	Flange PN16 A [mm]	Flange PN25 A [mm]	Flange PN40 A [mm]
50	53	106	106	106	106
65	68	126	126	126	126
80	83	141	141	141	141
100	103	161	161	167	167
125	128	191	191	193	193
150	153	216	216	222	222
200	203	271	271	282	288
250	253	326	327	338	350
300	303	376	382	398	415



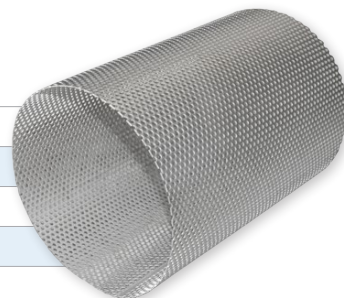
Filter inserts Type A / B

welded design, replacement screens for basket / simplex / duplex strainers, with O-ring-gasket (A) oder clamps / handle (B)

- » clean liquid, viscous and gaseous media
- » temporary or permanent protection of valves or industrial systems
- » long life time and low pressure losst
- » high differential pressure resistance
- » pleated sieve inserts
- » design, perforation and mesh size individually according to customer requirements



N. diameter:	DN25 ... DN500; more on request
Perforated sheets:	Stainless steel 1.4301 / 1.4571; more on request
Wire mesh:	Stainless steel 1.4401; mesh size up to 20 µm
Optional:	magnetic bars, individual design, perforated sheets



Filter inserts for Y-strainers

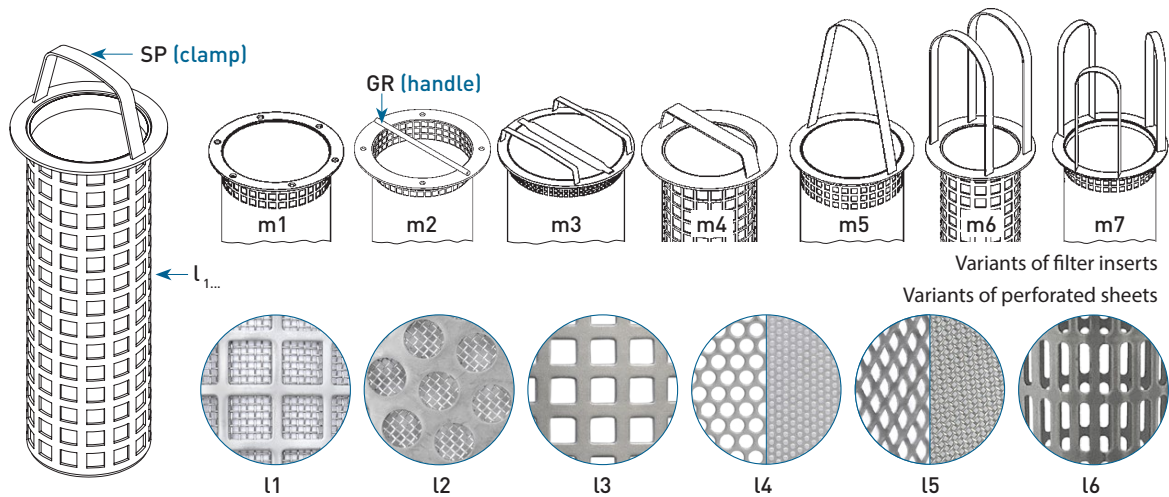
Replacement screens / Modifikations of Y-strainers

- » construct and replacement of filter inserts
- » changing of seals (also of third-party suppliers)
- » installation of differential pressure gauge, venting / emptying
- » perforation and mesh size individually according to customer requirements



custom made Industrial filters & sieves for

- » industrial plants for the chemical, oil and gas industry
- » food areas
- » filtration systems
- » washing facilities
- » water management



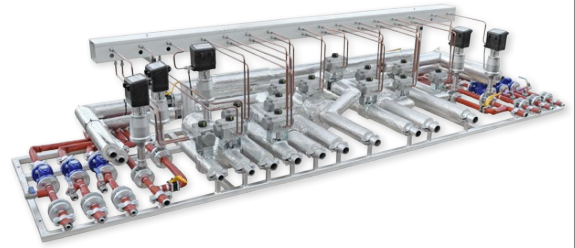
more from our production areas

Industrial plants & Pressure vessels



Modular process skids

- » Steam packages for the tire industry
- » Compressor units for industrial systems
- » Pumping stations for water management
- » Dosing systems for the chemical industry
- » Valve skid units for the oil and gas industry



www.industriefabrik.com



Vessels & Tanks

- » High pressure vessel
- » Dry and wet separators
- » Heat exchangers, oil coolers
- » Buffer tanks for gasoline, chemicals
- » Storage containers for oil, gas, water
- » Pulsation dampers, melting tanks, ...



more from our filter productions

Industrial strainers & Special filters



- » Tubular filters
- » Gap type filters
- » Pot type strainers
- » Tee type strainers
- » Simplex, duplex strainers
- » High pressure strainers
- » Industrial sieves, ...

www.basket-strainers.com



IFS Industriefabrik Schneider GmbH

Rosenweg 3 · 06780 Großzöberitz
Phone: +49 (0) 34956 / 3996-0
Fax: +49 (0) 34956 / 3996-66
E-Mail: info@industriefabrik.com
Web: www.industriefabrik.com

